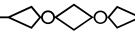




THE FOREST POST

Samanta Monthly - May 2020 Edition



COVID 19 Response : Samanta on GROUND ZERO

As the community is back post quarantine with all healthy and zero COVID positive cases as of today, we are trying to capture the loss of livelihood, lack of health resources, education resources, government schemes and support.

We work with people using different mediums -

1. One on One
2. Telecommunications
3. Nodes we have been able to move towards engagement around
 - Education
 - Menstrual and Maternal Health
 - Emergency Support

Front Page

खूब पढ़ेंगे, आगे बढ़ेंगे ।



समानता फ़ाउंडेशन

ध्यान दें ! इस किताब को पूरा भरकर जमा कराएँ
।

नाम: _____

कक्षा: _____

[Read More](#)



Samanta's work highlighted in International Association Of Schools Of Social Work (IASSW)

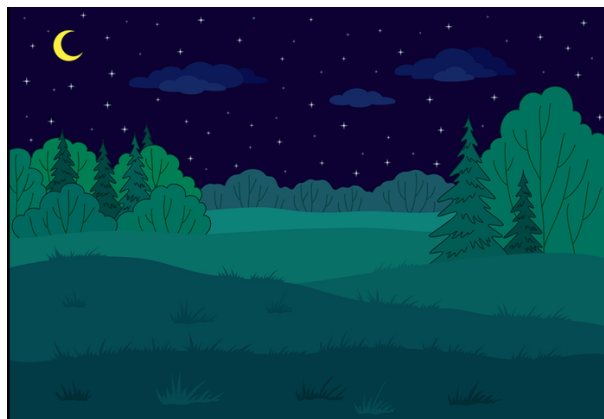


Samanta Foundation's work got featured by International Association Of Schools Of Social Work (IASSW). We are thankful and glad to highlight the actions, its outcomes and the next steps being taken to manage the pandemic among the communities we serve.

[Read More](#)



COVID Impact on Digital Education: Localisation for Forest Dwelling and Peripheral Communities



- Is there room for parents who cannot read and write?
- What about Digital India still to cover the 100%?

- Is Technology equivalent to Human Connect?
- Can communities contribute over indigenous solutions?

[Read More](#)



Humans of Forest III - The Fierce Woman



WELL BEHAVED WOMEN
RARELY MAKE HISTORY

Anita (name changed) is a one of those fierce women with amazing life experiences who is a no hold barred "Toofan". Now in her late 50s, she has the energy of a young and strong woman. She was born and brought up in the forest and was married in a family living in the same jungle. Due to prevalent social norms around girl education and the no schools around she has never been part of an institutional learning.

[Read More](#)



In order to pursue and strengthen our work we seek your support for

1. Provisioning of health (adequate food support), hygiene and sanitation resources during COVID and post COVID scenarios for the community with focus on - Women, Adolescent girls and Children.
2. Conducting training and awareness sessions. Use technology to support community resistance and response in situations similar to COVID in current and coming times.
3. Set up a Community owned learning centre for the women and children.

Donate



Vatika Hills Enclave, Kidduvala,
Raipur, DehraDun, Uttarakhand
- 248008
+91-9910654474

www.samanta.org.in 